

URW-295 (2.9t x 1.4m)

- Total width 0.6m
- Max working radius 8.41m
- Petrol powered with LPG and electric options
- Diesel powered with electric option
- Zero length increase with electric option (except diesel)
- Operator control of outrigger extension
- Radio remote control as standard
- Working area limitation
- Slew limitation (optional)
- Intelligent throttle activation for economy and ecology

Capacity 2.9t x 1.4m

Weight 1850 - 2090kg
(Depending on fuel option)

Max Boom Length 8.65m

Max Lifting Height 8.8m

Optional searcher hook & fly jib

| | |
|-------------|-------------------|
| Capacity | 700kg (max) |
| Length | 1500mm |
| Weight | 40kg |
| Tilt angles | 0°, 20°, 40°, 60° |



The URW-295 is the first mini crane available in Europe narrow enough to allow access through a standard doorframe,



but with almost 3 tonnes of lifting power. It also leads the way technically with an array of innovative safety features including a computer-controlled, intelligent voice warning system and the unique UNIC pressure compensation proportional valve, which allows multi-function radio remote control operation.

ADDITIONAL FEATURES



Radio remote control



Full safe load indicator (URW-295)



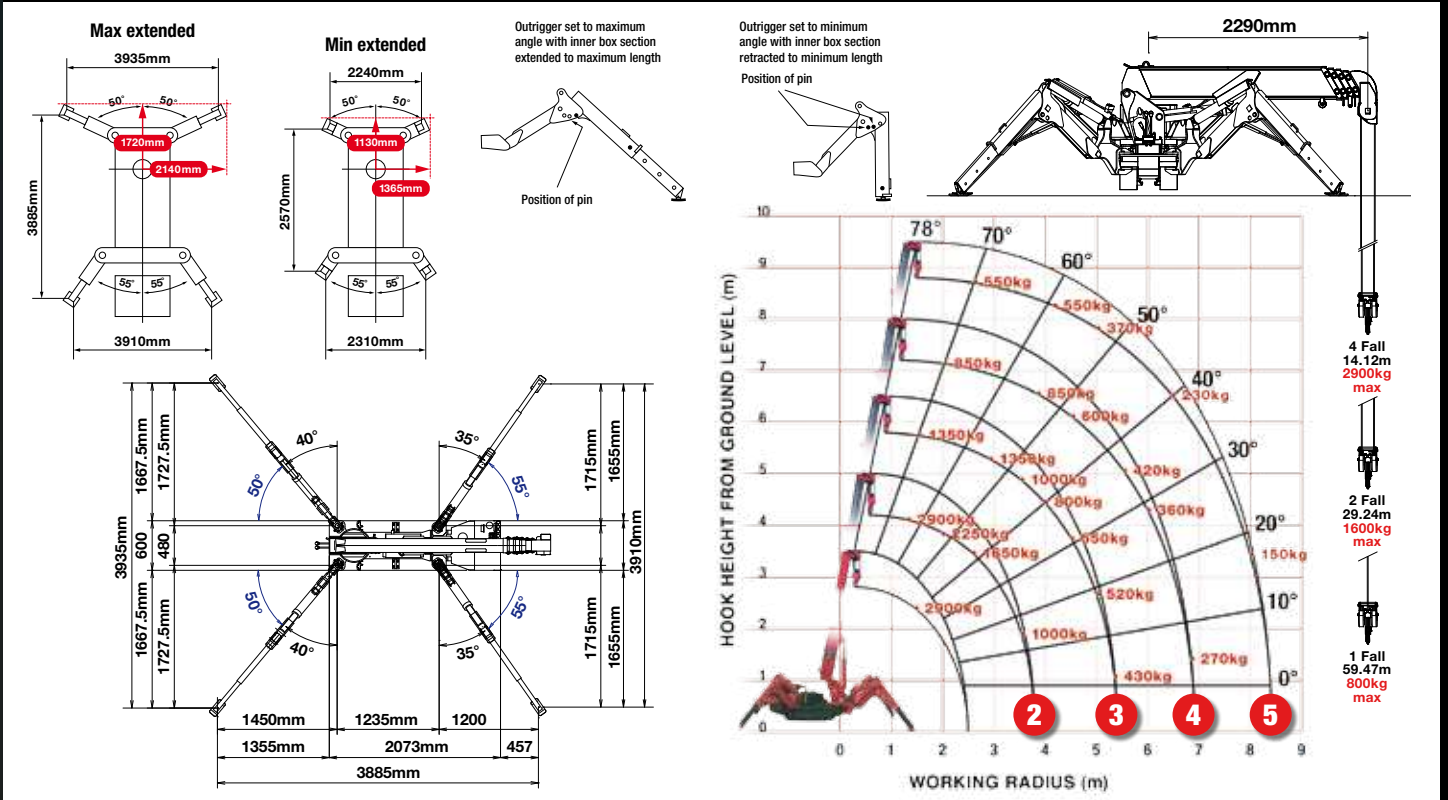
Full safe load indicator (URW-295-2)

CRANE SPECIFICATIONS

| | | |
|------------------------|--|--|
| Crane capacity | capacity: | 2.9t x 1.4m |
| Max working radius | max: | 8.41m |
| Max lifting height | approx: | 8.8m (9.8m with manual fly jib, 10.47m with fixed hook) |
| | URW-295-2: | 8.8m (10.9m with hydraulic fly jib, 11.7m with fixed hook) |
| Rope length | max: | 14.12m (4 fall), 29.24m (2 fall), 59.47m (1 fall) |
| Dimensions | folded: | 2690mm (2905mm diesel & electrical dual) (l) x 600mm (w) x 1375mm (h) |
| Weight | unladen: | 1850kg (1950kg with electric option, 1920kg with diesel option, 2090kg with diesel and electric dual option) |
| Point loadings | Due to the many variables involved, point loadings are only available on request | |
| Hook speed | approx: | 10m/min (with 4 layers and 4 falls) |
| Telescopic system | boom length: | 2.53 - 8.65m |
| | telescoping speed: | 6.12m/20 seconds |
| | boom type: | 5 section hydraulically telescoping boom, hexagonal box construction |
| Derricking angle/speed | approx: | 0 - 78°/11 seconds |
| Slewing angle/speed | approx: | 360° (continuous) 1.5min rpm |
| Traction system | drive: | hydrostatic, stepless forward and reverse |
| | travel speed: | 0 - 2.3km/h |
| | gradeability: | ± 20° (vertical) 10° (traverse) |
| | track ground length: | 1050mm |
| | track ground pressure: | 48kPa (0.49g/cm ²) |
| | track width: | 180mm |
| Engine | manufacturer: | Mitsubishi (Kubota diesel) |
| | fuel: | petrol with LPG and electric options, diesel with electric option |
| | maximum output: | 9.6kW (13PS) / 2000min rpm |
| | starting method: | electric and recoil start as standard |
| | tank capacity: | 6 litres petrol, 9 litres diesel |
| Electric motor | power: | 3.7KW |
| | voltage: | 400v AC 50/60Hz |
| Standard equipment | computer controlled moment limiter (safe load indicator), radio remote control, overwinding alarm, computer controlled intelligent voice warning system, multi-function operation by radio remote control, intelligent throttle activation, automatic hook stow, overload warning alarms, overload warning lamps, working area limitation | |
| Optional equipment | 1 fall hook block, 2 fall hook block, LPG dual power, mains electric dual power (400v), diesel engine, low marking tracks, slew limitation, searcher hook small 300kg, searcher hook 700kg, 600kg capacity hydraulic fly jib (295-2), manual fly jib 700kg with single part line, radio remote control with feedback display (with i4500 SLI) and data logging | |

MINI SPIDER CRANE

RATED LOADS & OUTRIGGER POSITIONS



SECOND STAGE EXTENDED 2.53 - 4.075M BOOM LENGTH

| Working radius | m | up to 1.0 | 1.4 | 1.5 | 1.8 | 2.0 | 2.5 | 3.0 | 3.5 | 3.835 | |
|----------------|--------------|-----------|-------|-------|-------|-------|-------|-------|-------|-------|-----|
| Outrigger | Max-extended | kg | 2,900 | 2,900 | 2,650 | 2,250 | 2,050 | 1,650 | 1,300 | 1,000 | 900 |
| | Min-extended | kg | 2,000 | 2,000 | 2,000 | 1,450 | 1,100 | 650 | 490 | 350 | 250 |

THIRD STAGE EXTENDED 4.075 - 5.61M BOOM LENGTH

| Working radius | m | up to 2.2 | 2.5 | 2.9 | 3.0 | 3.5 | 4.0 | 4.5 | 5.0 | 5.37 | |
|----------------|--------------|-----------|-------|-------|-------|-------|-------|-----|-----|------|-----|
| Outrigger | Max-extended | kg | 1,350 | 1,350 | 1,350 | 1,250 | 1,000 | 800 | 650 | 520 | 430 |
| | Min-extended | kg | 800 | 650 | 530 | 500 | 380 | 280 | 220 | 160 | 120 |

FOURTH STAGE EXTENDED 5.61 - 7.13M BOOM LENGTH

| Working radius | m | up to 3.3 | 3.8 | 4.0 | 4.5 | 5.0 | 5.5 | 6.0 | 6.5 | 6.89 | |
|----------------|--------------|-----------|-----|-----|-----|-----|-----|-----|-----|------|-----|
| Outrigger | Max-extended | kg | 850 | 850 | 750 | 600 | 500 | 420 | 360 | 320 | 270 |
| | Min-extended | kg | 420 | 340 | 300 | 250 | 190 | 140 | 100 | 80 | 60 |

FIFTH STAGE EXTENDED 7.13 - 8.65M BOOM LENGTH

| Working radius | m | up to 3.8 | 4.1 | 4.5 | 5.0 | 5.5 | 6.0 | 6.5 | 7.0 | 8.0 | 8.41 | |
|----------------|--------------|-----------|-----|-----|-----|-----|-----|-----|-----|-----|------|-----|
| Outrigger | Max-extended | kg | 550 | 550 | 450 | 370 | 310 | 270 | 230 | 200 | 150 | 130 |
| | Min-extended | kg | 350 | 290 | 250 | 200 | 160 | 130 | 100 | 70 | 40 | 30 |

SEARCHER HOOK SMALL - 300kg

Stowed position

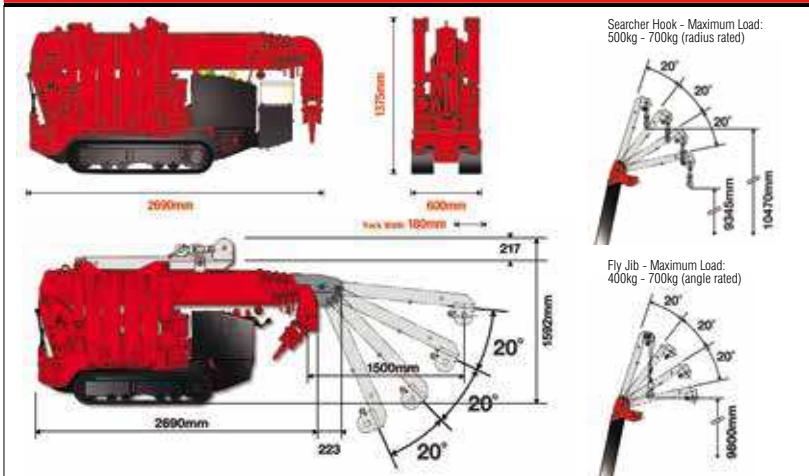


In operation



| | |
|------------------|-------------------|
| Lifting capacity | 300kg (max) |
| Length | 500mm |
| Weight | 15kg |
| Tilt angles | 0°, 20°, 40°, 60° |

DIMENSIONS



SEARCHER HOOK & FLY JIB

URW-295-2 - HYDRAULIC FLY JIB

