



LITHIUM-ION UM325 POP-UP CRANE



UNIC
CRANES EUROPE

CAPACITY: 3.2t x 2.2m MAXIMUM LIFTING HEIGHT: 17.5m MAXIMUM WORKING RADIUS: 15.7m
SLEWING RANGE: 360° continuous WEIGHT: 3830kg

UM325 (3.2t x 2.2m)

LITHIUM-ION POWERED POP-UP MINI SPIDER CRANE



- Total width 0.75m
- Non-marking tracks
- Max working radius 15.7m
- Max lifting height 17.5m
- Powered by a maintenance free 159Ah lithium-ion battery
- Continuous operation while charging
- Auto-levelling system making setup easy
- Pick & carry capacity: 500kg
- Five-section derricking boom & four-section telescoping jib
- Unique pop-up column reduces rear swing overhang
- Full colour, high resolution i4500 SLI system
- Five position, three extension variable outrigger system
- Radio remote control with feedback display as standard
- Intelligent power activation for economy and ecology
- Low noise output
- Zero emissions

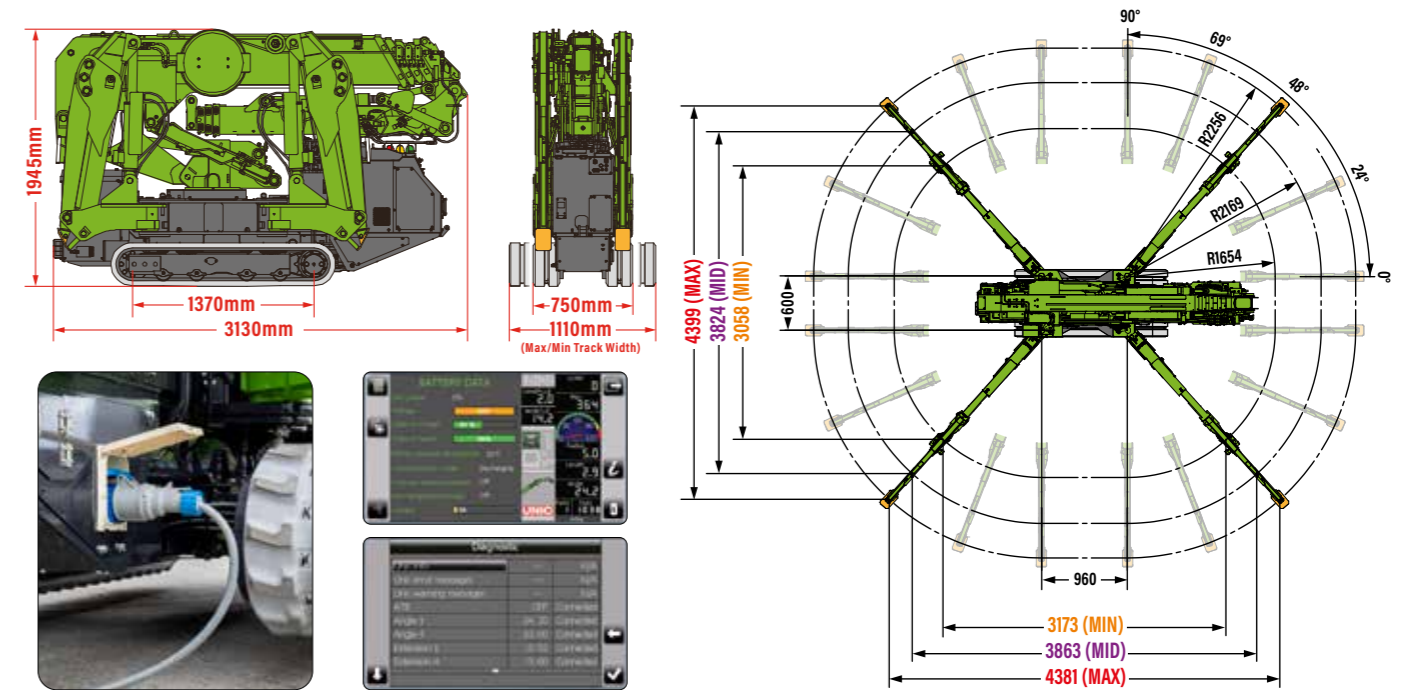


FOUR-SECTION TELESCOPIC HYDRAULIC JIB

Capacity	1000kg (max)
Length	1980-5740mm
Extending Speed	3.76m / 21s
Tilt angles	-10° to 80°

Radio remote control with digital feedback

CRANE & OUTRIGGER RADIUS DIMENSIONS



Charge the UM325 while working with a 110/240v supply

Battery data & diagnostics information

Powered by lithium-ion technology and a high-capacity battery pack with the ability to charge while in operation, the UM325 Pop-Up Crane ensures sustained power, contributing to reduced carbon emissions and eco-friendly, green lifting practices.

Its extendable tracks provide heightened stability and manoeuvrability, facilitating seamless navigation across many terrains. Standard features include a 2.9m – 10.0m main boom and a hydraulic telescoping luffing jib/searcher hook attachment with a maximum capacity of 1000kg, extension range from 2.0m to 5.7m, and a luffing range of -10° to 80° offset. With these capabilities, the UNIC UM325 achieves an impressive maximum lifting height of 17.5m and a maximum working radius of 15.7m.

The flexible variable outrigger design, featuring five offsettable angles and three extensions, allows operation in tighter spaces without compromising load ratings. The pop-up turret design reduces the rear overhang, enabling the crane to work closer to walls and obstacles.

Fully radio remote-controlled, the UM325 ensures a swift and precise setup for lifting operations, travelling, setup, outrigger deployment, auto-levelling, and pick and carry modes. Additionally, the UM325 comes with non-marking tracks as standard to prioritise surface protection.

HIGH-RESOLUTION i4500 SAFE LOAD INDICATOR SYSTEM



The advanced i4500 Safe Load Indicator system revolutionises lifting operations, featuring an innovative load chart philosophy for improved capacities and range limiting.

With user-friendly graphics and on-screen diagnostics, it streamlines planning and execution, ensuring operational efficiency.

CRANE SPECIFICATIONS

Crane capacity	max:	3.2t x 2.2m
Max working radius	max:	9.8m (15.7m with hydraulic jib, 15.6m with searcher hook)
Max lifting height	approx:	10.9m (16.4m with hydraulic jib, 17.5m with searcher hook)
Rope length	rope:	8mm x 59m
Dimensions	folded:	3130mm (l) x 750mm (1110mm) (w) x 1945mm (h)
Weight	unladen:	3830kg
Point loadings	Due to the many variables involved, point loadings are only available on request	
Hook speed	approx:	6.0 (9.0)/m/min (4-fall), 12.0 (18.0)/m/min (2-fall), 24.0 (36.0)/m/min (1-fall)
Main boom	boom length:	2.895 - 10.075m
	telescoping speed:	78m/34 seconds
	boom type:	5 section, hydraulically telescoping boom, hexagonal box construction
Jib	jib length:	1.98 - 5.74m
	telescoping speed:	3.76m/21 seconds
	jib type:	4 section, hydraulically telescoping jib, box construction
Slewing angle/speed	approx:	360° (continuous) 1.2 rpm
Traction system	drive:	hydrostatic 2-speed, stepless forward and reverse
	travel speed:	0 - 2.0km/h
	gradeability:	± 20° (vertical) 10° (traverse)
	track ground length:	1370mm
	track ground pressure:	68.2kPa (0.70kg/cm ²)
	track width:	200mm
Battery	type:	Lithium-ion battery
	pack voltage:	DC 51.2V
	pack capacity:	159Ah
	pack composition:	4 series x 3 parallel
Battery charger	input voltage:	AC95-265V (50-60Hz), single-phase
	input current:	16A (AC200V), 15A (AC100V)
	output voltage:	DC 56.0V
	output current:	60A (AC200V), 30A (AC100V)
	charging time:	3.0 hr (AC200V), 6.2 hr (AC100V)
Standard equipment	computer controlled moment limiter (safe load indicator), radio remote control with feedback display, overwinding alarm, computer controlled intelligent voice warning system, multi-function operation by radio remote control, intelligent power activation, automatic hook stow, overload warning lamps, variable outriggers, virtual wall, slew, height and radius range limitation, non-marking tracks, 4-fall hook block, single-line hook, searcher hook, extendable tracks	

DESIGNED FOR ENCLOSED AREA LIFTING

The pop-up turret design enables the crane to be used closer to walls and obstacles than ever before by reducing the rear overhang, providing maximum versatility. The new, increased flexible variable outrigger design features five different offsettable angles and three different extensions, allowing the UNIC UM325 to work in tighter, more restricted areas while maintaining excellent load ratings.



UNIQUE FEATURE OF THE UM325 POP-UP SPIDER CRANE

- The compact UM325 with its expandable tracks for improved stability can be manoeuvred easily into position by the operator. Taking the width from 1110mm to 750mm gives users the option to manoeuvre through suitable doorways.
- The variable outriggers of the UM325 give operators the ability to position the outriggers where needed in confined areas or around obstacles on-site. Additionally, with the variable outriggers users can unlock even more performance with Max+ capacities.
- The position of the unique pop-up column means the UM325 has increased stability. It also offers the ability to work closer to walls and obstacles than its closest competitor, due to the minimal overhang of the column.
- The 1000kg capacity 4-section telescopic hydraulic jib of the UM325 takes the maximum hook height from 10.5m to 17.5m, and the maximum working radius from 9.82m to 15.7m.

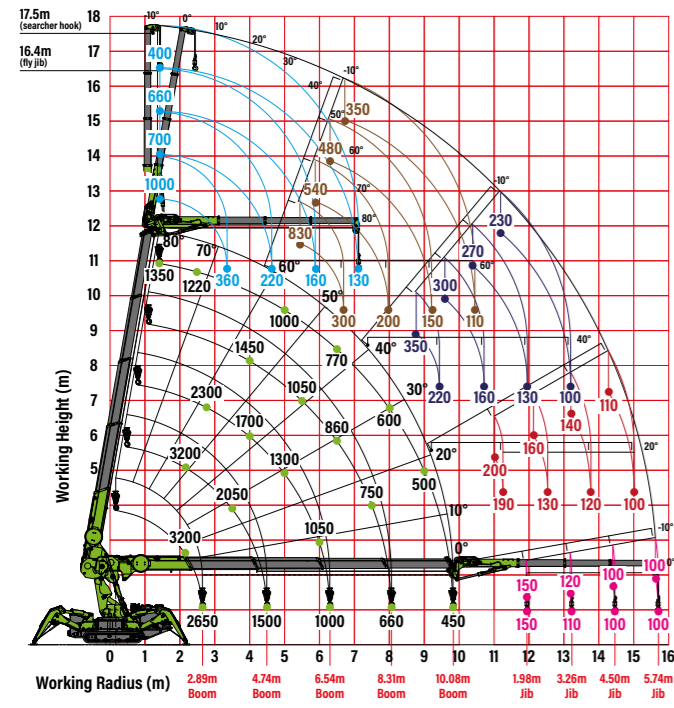
UM325 (3.2t x 2.2m)

- MAIN BOOM 5 EXTENDED SET AT 80° - JIB AT -10° & 80°
- MAIN BOOM 5 EXTENDED SET AT 60° - JIB AT -10° & 60°
- MAIN BOOM 5 EXTENDED SET AT 40° - JIB AT -10° & 40°
- MAIN BOOM 5 EXTENDED SET AT 20° - JIB AT -10° & 20°
- MAIN BOOM 5 EXTENDED SET AT 0° - JIB AT -10° & 0°

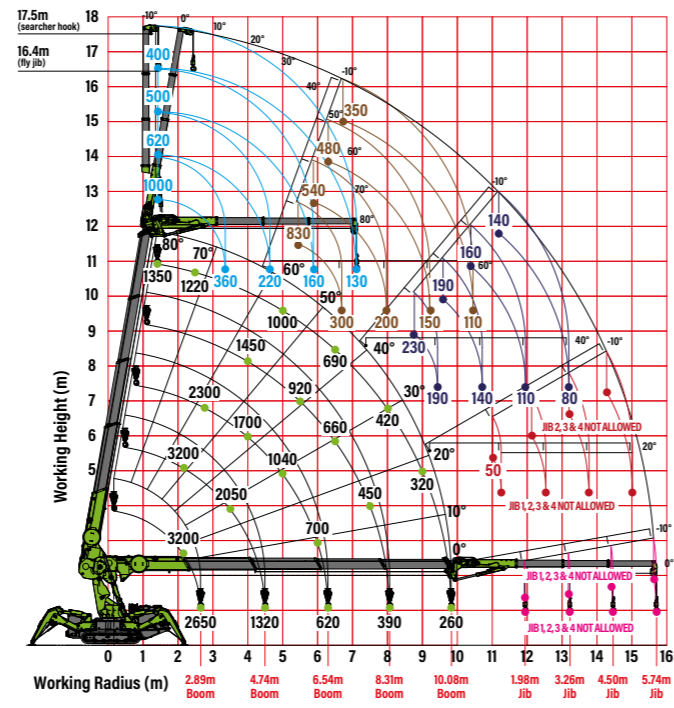
LITHIUM-ION POWERED POP-UP MINI SPIDER CRANE



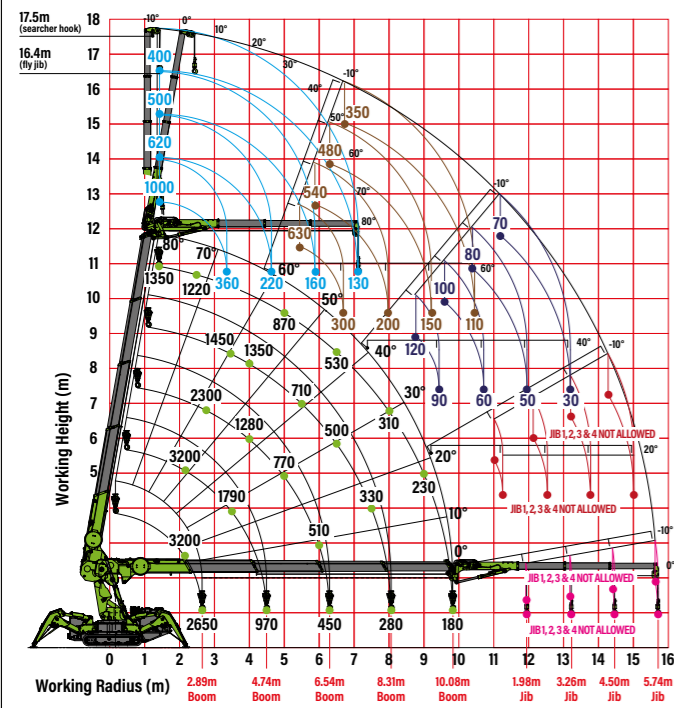
WORKING RANGE - OUTRIGGERS SET TO MAX+



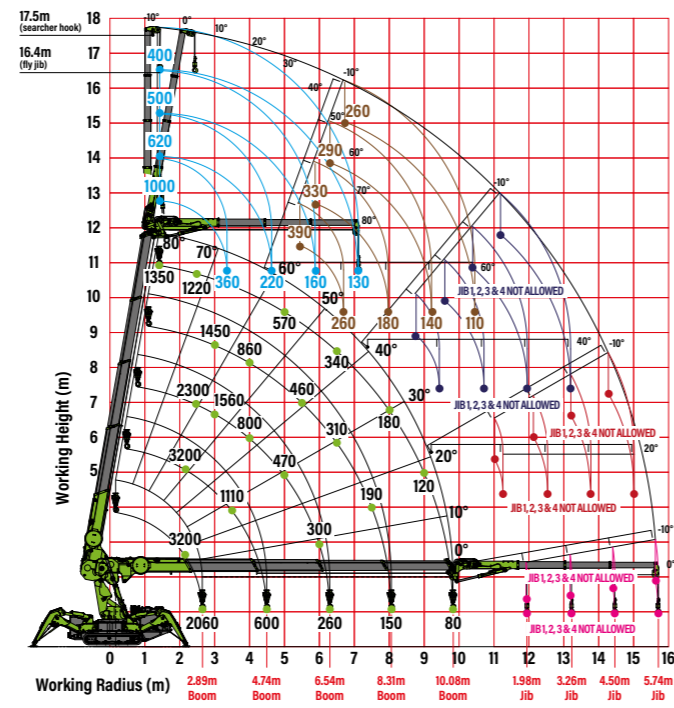
WORKING RANGE - OUTRIGGERS SET TO MAX



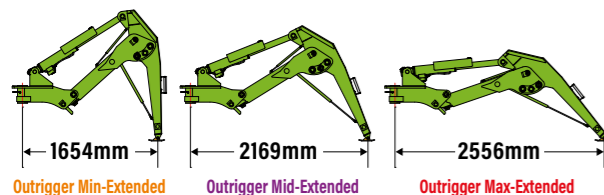
WORKING RANGE - OUTRIGGERS SET TO MID



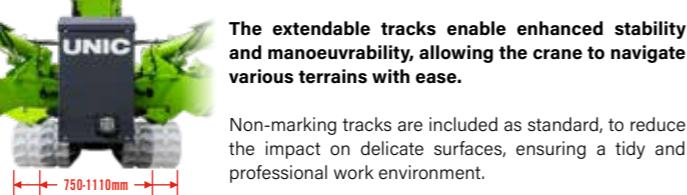
WORKING RANGE - OUTRIGGERS SET TO MIN



OUTRIGGER POSITIONS



NON-MARKING EXTENDABLE TRACKS



MAIN BOOM RATED LOADS & HOOK FALLS

FIRST STAGE 2.895 m BOOM LENGTH

Working radius	m	up to 1.0	1.5	2.2	2.5	2.6	2.645	
Outrigger	Max + extended (Max+)	kg	3200	3200	3200	3000	2770	2650
	Max extended (Max)	kg	3200	3200	3200	3000	2770	2650
	Max - extended (Max-)	kg	3200	2500	1100	800	700	650
	Mid + extended (Mid+)	kg	3200	3200	3200	3000	2770	2650
	Mid extended (Mid)	kg	3200	3200	3200	3000	2770	2650
	Mid - extended (Mid-)	kg	3200	2500	1100	800	700	650
	Min + extended (Min+)	kg	3200	3200	3200	3000	2770	2650
	Min extended (Min)	kg	3200	3200	3200	2490	2220	2060
	Min - extended (Min-)	kg	3200	2500	1100	800	700	650

SECOND STAGE EXTENDED 2.895 - 4.74 m BOOM LENGTH

Working radius	m	up to 1.0	1.5	2.2	2.5	2.6	2.7	3.0	3.5	4.0	4.49
Outrigger	Max + extended (Max+)	kg	3200	3200	2850	2750	2650	2450	2050	1750	1500
	Max extended (Max)	kg	3200	3200	2850	2750	2650	2450	2050	1740	1320
	Max - extended (Max-)	kg	3200	2500	1100	850	750	700	500	350	250
	Mid + extended (Mid+)	kg	3200	3200	2850	2750	2650	2450	2050	1740	1320
	Mid extended (Mid)	kg	3200	3200	2850	2750	2650	2450	1790	1260	970
	Mid - extended (Mid-)	kg	3200	2500	1100	850	750	700	500	350	250
	Min + extended (Min+)	kg	3200	3200	2850	2750	2650	2450	1790	1260	970
	Min extended (Min)	kg	3200	3200	2450	2210	2020	1540	110	780	600
	Min - extended (Min-)	kg	3200	2500	1100	850	750	700	500	350	250

THIRD STAGE EXTENDED 4.74 - 6.545 m BOOM LENGTH

Working radius	m	up to 1.0	1.5	2.0	2.5	2.6	2.7	3.0	3.5	4.0	4.5	5.0	5.5	6.0	6.295
Outrigger	Max + extended (Max+)	kg	2300	2300	2300	2300	2300	2100	1850	1700	1500	1300	1150	1050	1000
	Max extended (Max)	kg	2300	2300	2300	2300	2300	2100	1850	1700	1360	1040	880	700	620
	Max - extended (Max-)	kg	2300	2300	1300	850	750	700	550	400	300	200	130	90	50
	Mid + extended (Mid+)	kg	2300	2300	2300	2300	2300	2100	1850	1700	1360	1040	880	700	620
	Mid extended (Mid)	kg	2300	2300	2300	2300	2300	2100	1790	1280	1020	770	660	510	450
	Mid - extended (Mid-)	kg	2300	2300	1300	850	750	700	550	400	300	200	130	90	50
	Min + extended (Min+)	kg	2300	2300	2300	2300	2300	2100	1790	1280	1020	770	660	510	450
	Min extended (Min)	kg	2300	2300	2300	2300	2220	2020	1600	1120	800	650	470	420	300
	Min - extended (Min-)	kg	2300	2300	1300	850	750	700	550	400	300	200	130	90	50

FOURTH STAGE EXTENDED 6.545 - 8.31 m BOOM LENGTH

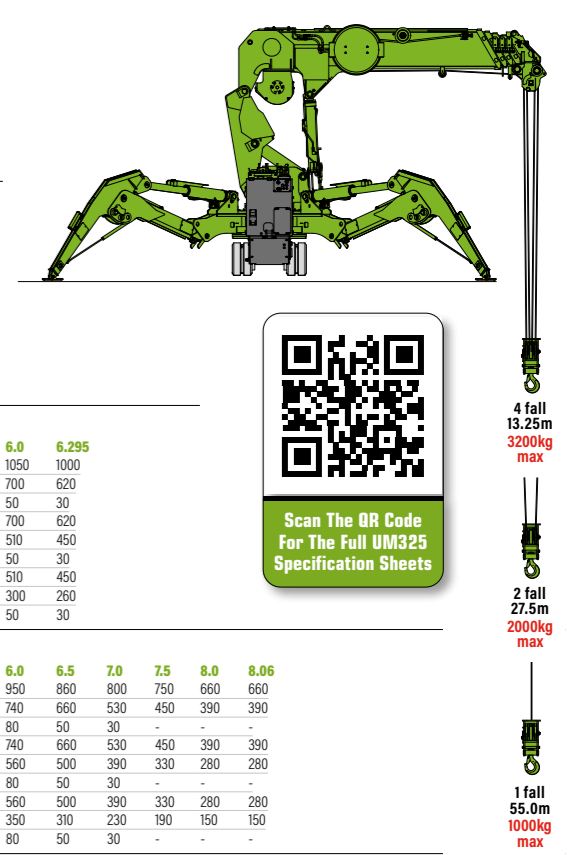
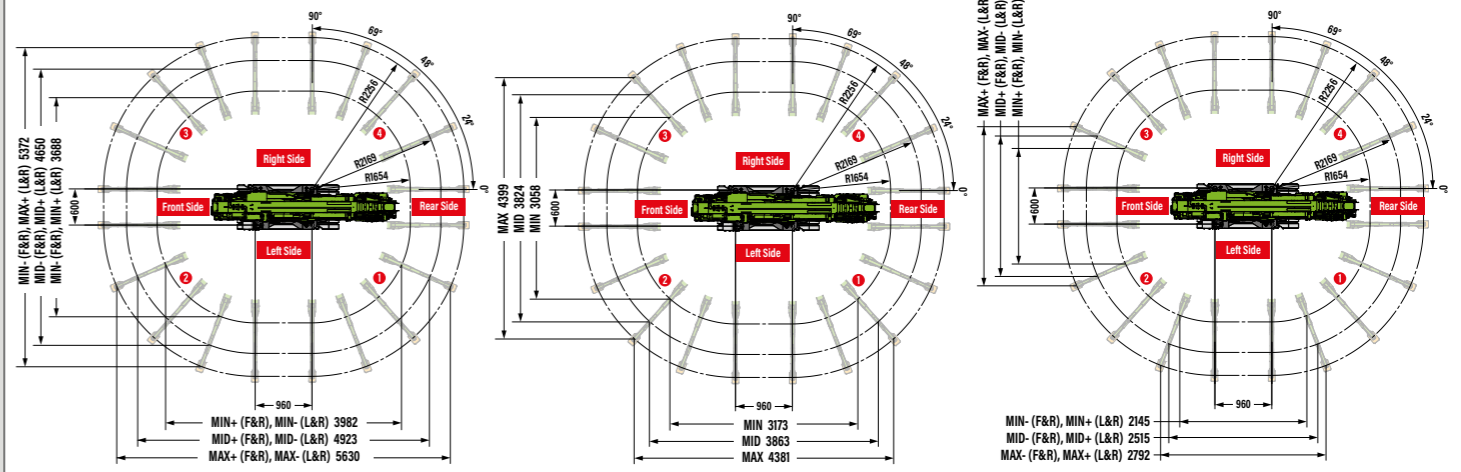
Working radius	m	up to 1.07	1.5	2.0	2.5	2.6	2.7	3.0	3.5	4.0	4.5	5.0	5.5	6.0	6.5	7.0	7.5	8.0	8.06	
Outrigger	Max + extended (Max+)	kg	1450	1450	1450	1450	1450	1450	1450	1250	1150	1050	950	860	800	750	660	660		
	Max extended (Max)	kg	1450	1450	1450	1450	1450	1450	1450	1250	1100	920	740	660	530	450	390	390		
	Max - extended (Max-)	kg	1450	1450	1350	900	800	750	600	420	250	180	130	80	50	30				
	Mid + extended (Mid+)	kg	1450	1450	1450	1450	1450	1450	1450	1250	1100	920	740	660	530	450	390	390		
	Mid extended (Mid)	kg	1450	1450	1450	1450	1450	1450	1350	1060	830	710	560	500	390	330	280	280		
	Mid - extended (Mid-)	kg	1450	1450	1350	900	800	750	600	420	250	180	130	80	50	30				
	Min + extended (Min+)	kg	1450	1450	1450	1450	1450	1450	1350	1060	830	710	560	500	390	330	280	280		
	Min extended (Min)	kg	1450	1450	1450	1450	1450	1450	1170	860	700	530	460	350	310	230	190	150	150	
	Min - extended (Min-)	kg	1450	1450	1350	900	800	750	600	420	250	180	130	80	50	30				

FIFTH STAGE EXTENDED 8.31 - 10.075 m BOOM LENGTH

Working radius	m	up to 1.414	1.5	2.0	2.5	2.6	2.7	3.0	3.5	4.0	4.5	5.0	5.5	6.0	6.5	7.0	7.5	8.0	8.5	9.0	9.5	9.825	
Outrigger	Max + extended (Max+)	kg	1350	1340	1270	1220	1210	1190	1150	1120	1100	1050	1000	920	850	770	700	620	600	520	470	450	
	Max extended (Max)	kg	1350	1340	1270	1220	1210	1190	1150	1120	1100	1050	1000	920	780	690	570	510	420	400	320	290	260
	Max - extended (Max-)	kg	1350	1340	1270	900	800	750	600	450	320	250	200	150	100	80	50						
	Mid + extended (Mid+)	kg	1350	1340	1270	1220	1210	1190	1150	1120	1100	1050	1000	920	780	690	570	510	420	400	320	290	260
	Mid extended (Mid)	kg	1350	1340	1270	1220	1210	1190	1150	1120	1100	1050	870	740	590	530	430	390	310	300	230	200	180
	Mid - extended (Mid-)	kg	1350	1340	1270	900	800	750	600	450	320	250	200	150	100	80	50						
	Min + extended (Min+)	kg	1350	1340	1270	1220	1210	1190	1150	1120	1100	1050	870	740	590	530	430	390	310	300	230	200	180
	Min extended (Min)	kg	1350	1340	1270	1220	1210	1190	1150	1120	900	730	570	490	380	340	260	240	180	170	120	100	80
	Min - extended (Min-)	kg	1350	1340	1270	900	800	750	600	450	320	250	200	150	100	80	50						

VARIABLE OUTRIGGER WORKING MODES

The variable outrigger design features five different offsettable angles and three different extensions for each outrigger, allowing the UNIC UM325 to work in tighter, more restricted areas. The working modes around the crane change, depending on the outrigger angles and extensions.



Scan The QR Code For The Full UM325 Specification Sheets

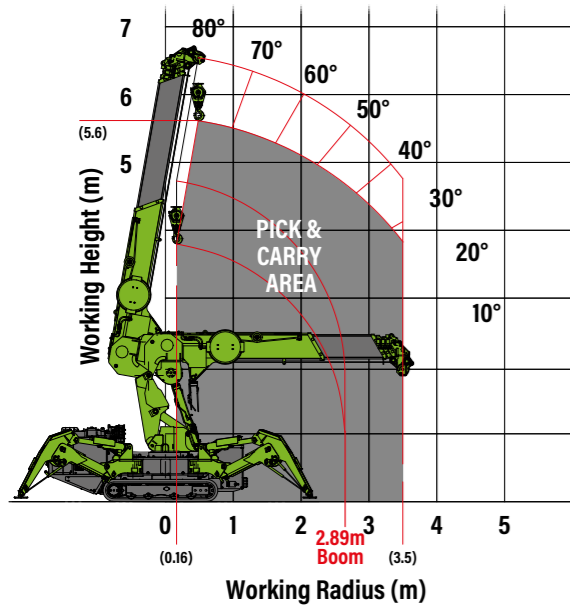
UM325 (3.2t x 2.2m)

LITHIUM-ION POWERED POP-UP MINI SPIDER CRANE



WORKING RANGE - PICK & CARRY

The crane's versatile pick and carry function enhances productivity, enabling both lifting and transporting of loads efficiently on site.



PICK & CARRY RATED LOADS

Boom-sections extended: 1

Working Radius (m)	1.0	1.5	2.0	2.645
Net Rated Loads (kg)	500	500	440	200

Boom-sections extended: 1 + 2

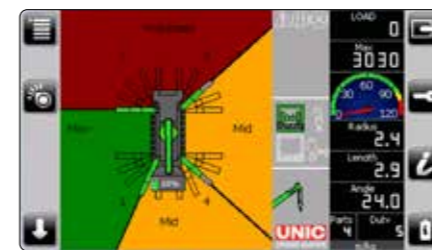
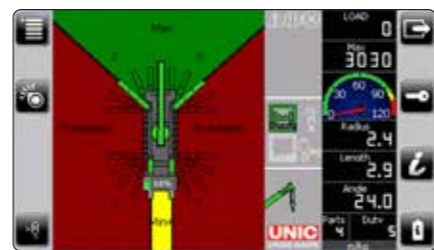
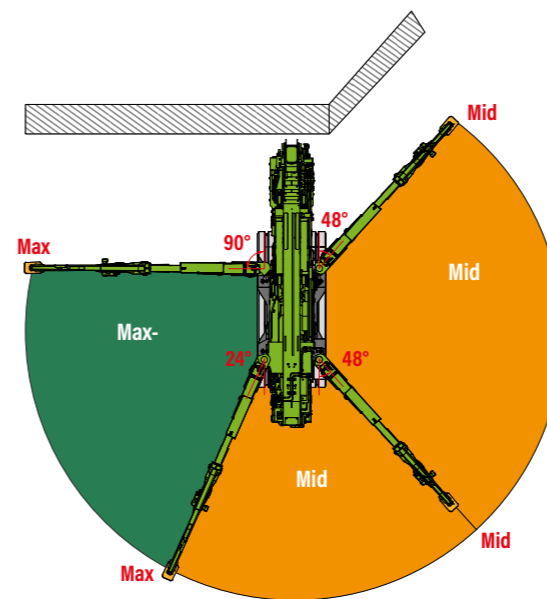
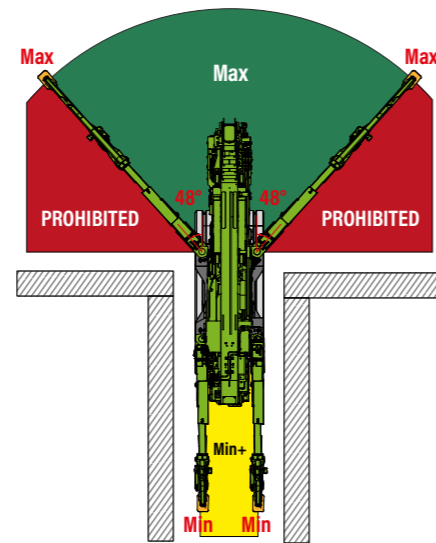
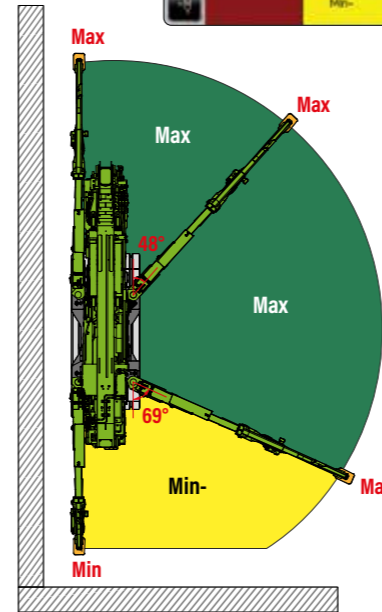
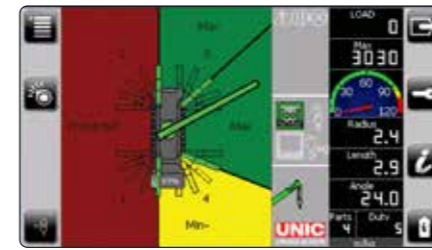
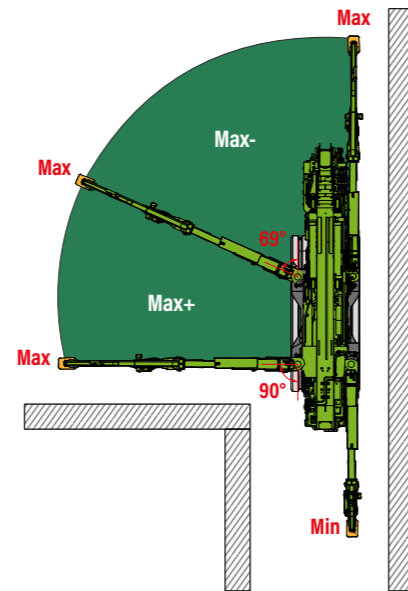
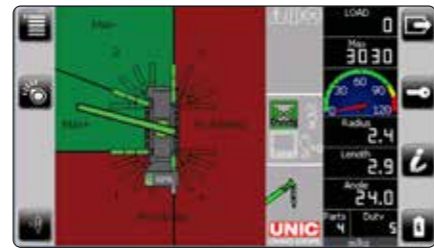
Working Radius (m)	1.0	1.5	2.0	3.0	3.5
Net Rated Loads (kg)	500	500	440	150	70

LIFTING FROM THE GROUND UP

With thanks to the hydraulic luffing jib, the UNIC UM325 allows operators to lift closer and extend further, ideal for lifting operations when working in-between floors and in confined spaces.



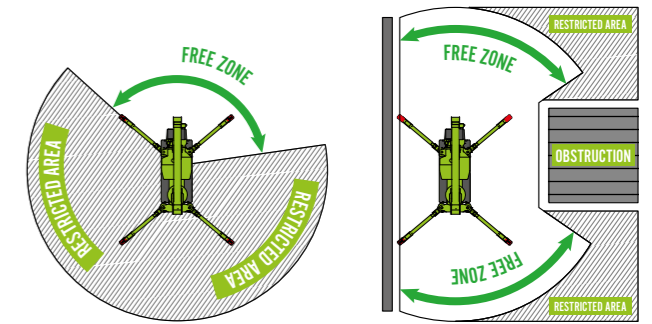
VARIABLE OUTRIGGER - WORKING EXAMPLES



SLEW AND HEIGHT LIMITATION AS STANDARD

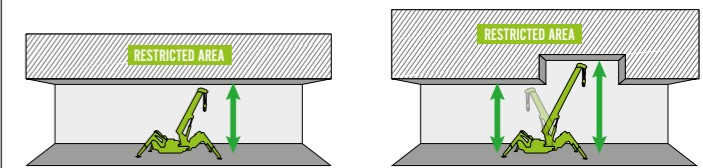
SLEW LIMITATION & VARIABLE SLEW LIMITATION

Operators can set slew limitation and variable slew limitation to avoid the crane working outside of its safe working envelope, helping to increase safety, reduce operator error and provide complete peace of mind during lifting operations.



HEIGHT LIMITATION & VARIABLE HEIGHT LIMITATION

Operators can set both fixed and adjustable height limits to ensure the crane functions within safe operational parameters. This functionality improves safety protocols and reduces the likelihood of operator errors.



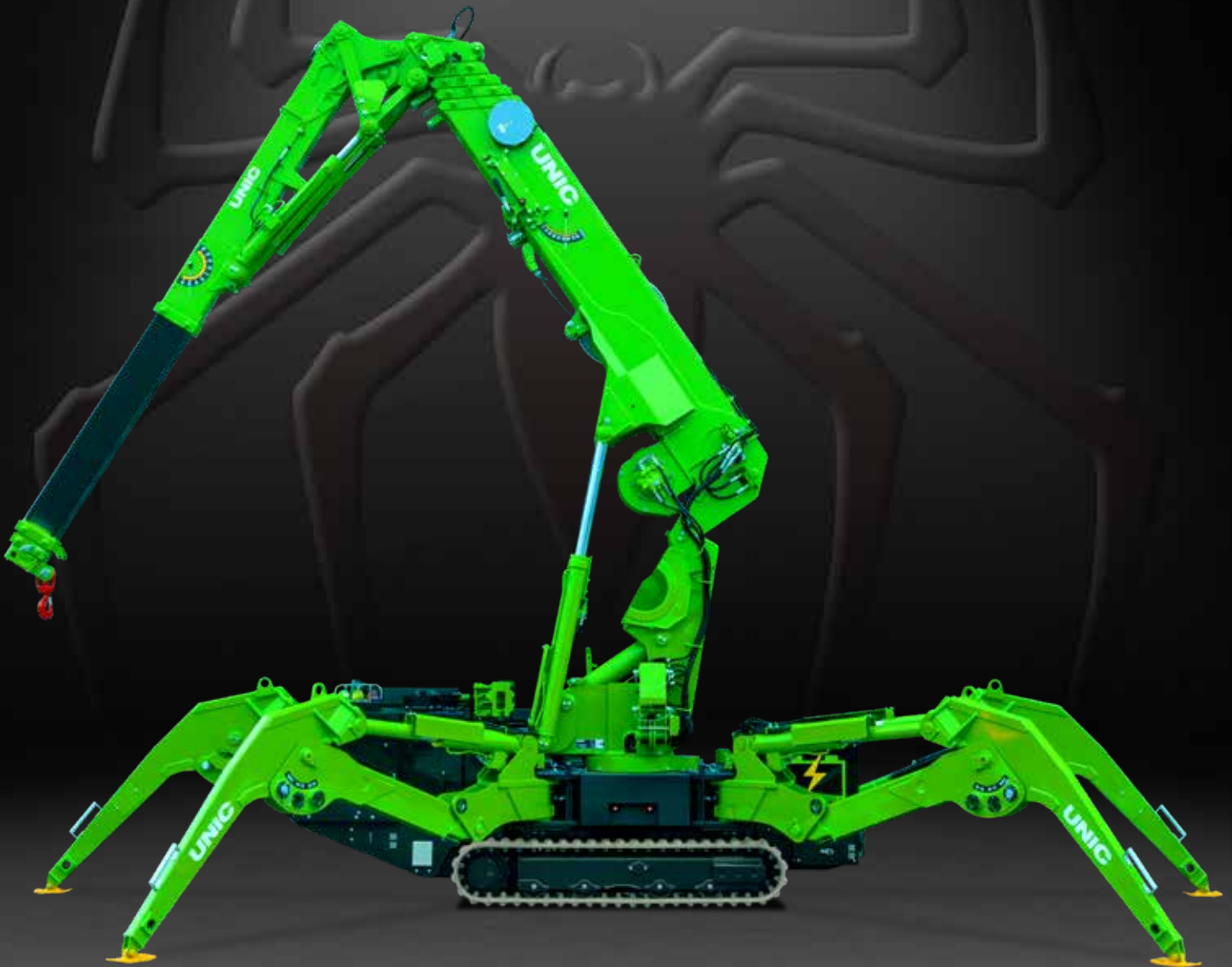
AUTO-LEVELLING FOR UNEVEN CONDITIONS

The auto-levelling function guarantees precise crane placement irrespective of the site's terrain and conditions.

This feature not only enhances operator efficiency by automatically and efficiently levelling the crane but also adapts seamlessly to the ground conditions, saving valuable time.



LITHIUM-ION
UM325
POP-UP
CRANE



UNIC
CRANES EUROPE

HEAD OFFICE: GGR UNIC House, Pegasus Way, Haddenham Business Park, Haddenham, Buckinghamshire, HP17 8LJ
Telephone: +44 (0)1844 202071



Email: sales@uniccranes.com Web: www.uniccranes.com